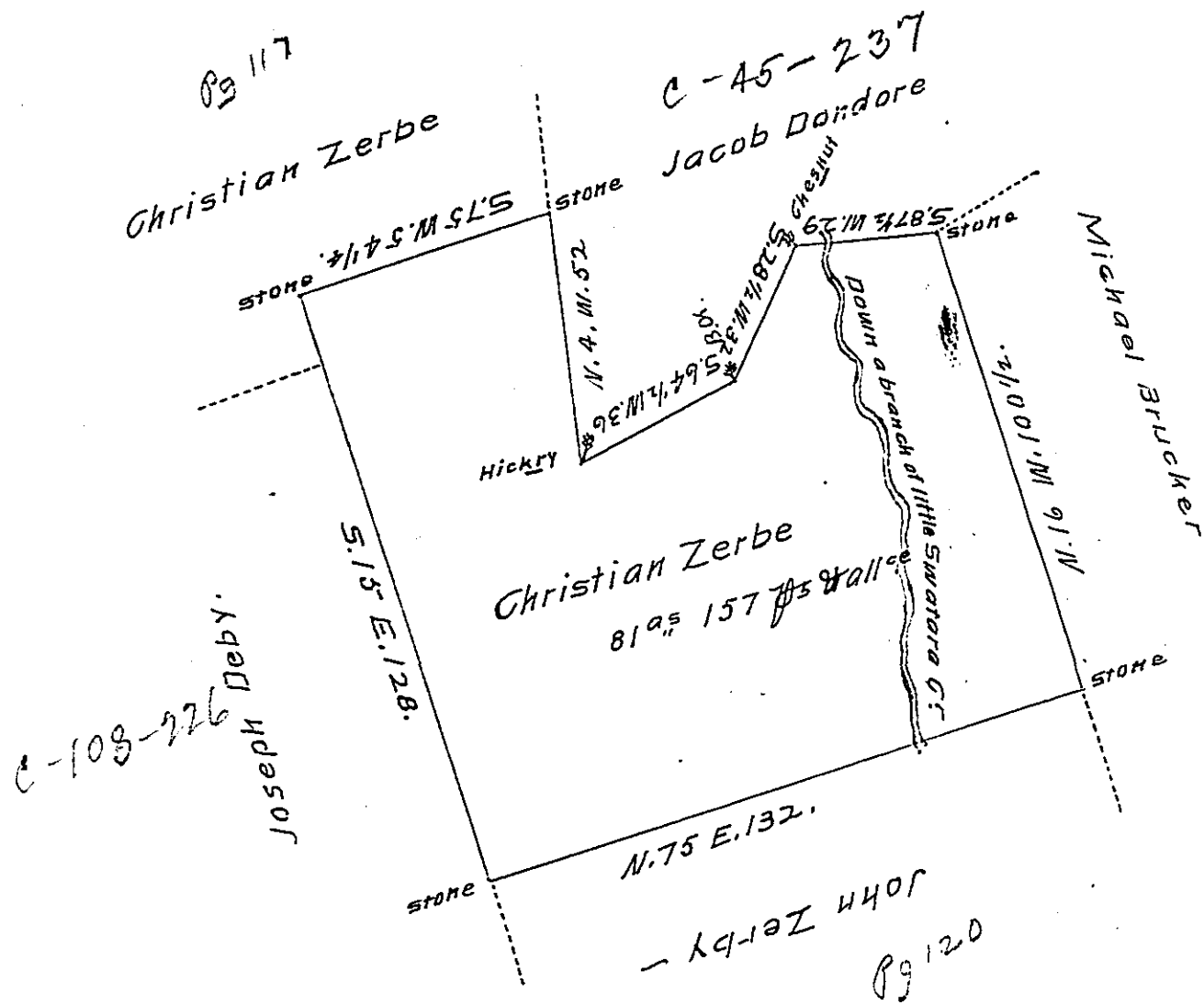


FORM NO 1.



By Virtue of a Warrant Dated the 4<sup>th</sup> day of October 1792, Surveyed the 24<sup>th</sup> day of January 1793, for Christian Zerbe the above Described Tract of Land Situate on the head Branch of Little Swatara Creek in Bethel Township in the County of Berks, Containing Eighty one Acres & one hundred and fifty seven Perches & the allowance of six Per Cent for Roads &c.

J<sup>no</sup> Weidman D.S.

To Daniel Bradhead Esq<sup>r</sup>  
 Surveyor Gen<sup>l</sup> of Pennsylvania

IN TESTIMONY that the above is a copy of the original remaining on file in the Department of Internal Affairs of Pennsylvania, made conformably to an Act of Assembly approved the 16th day of February, 1833, I have hereunto set my Hand and caused the Seal of said Department to be affixed at Harrisburg, this 10<sup>th</sup> day of Oct. 1907

*Henry Howell*  
 Secretary of Internal Affairs.